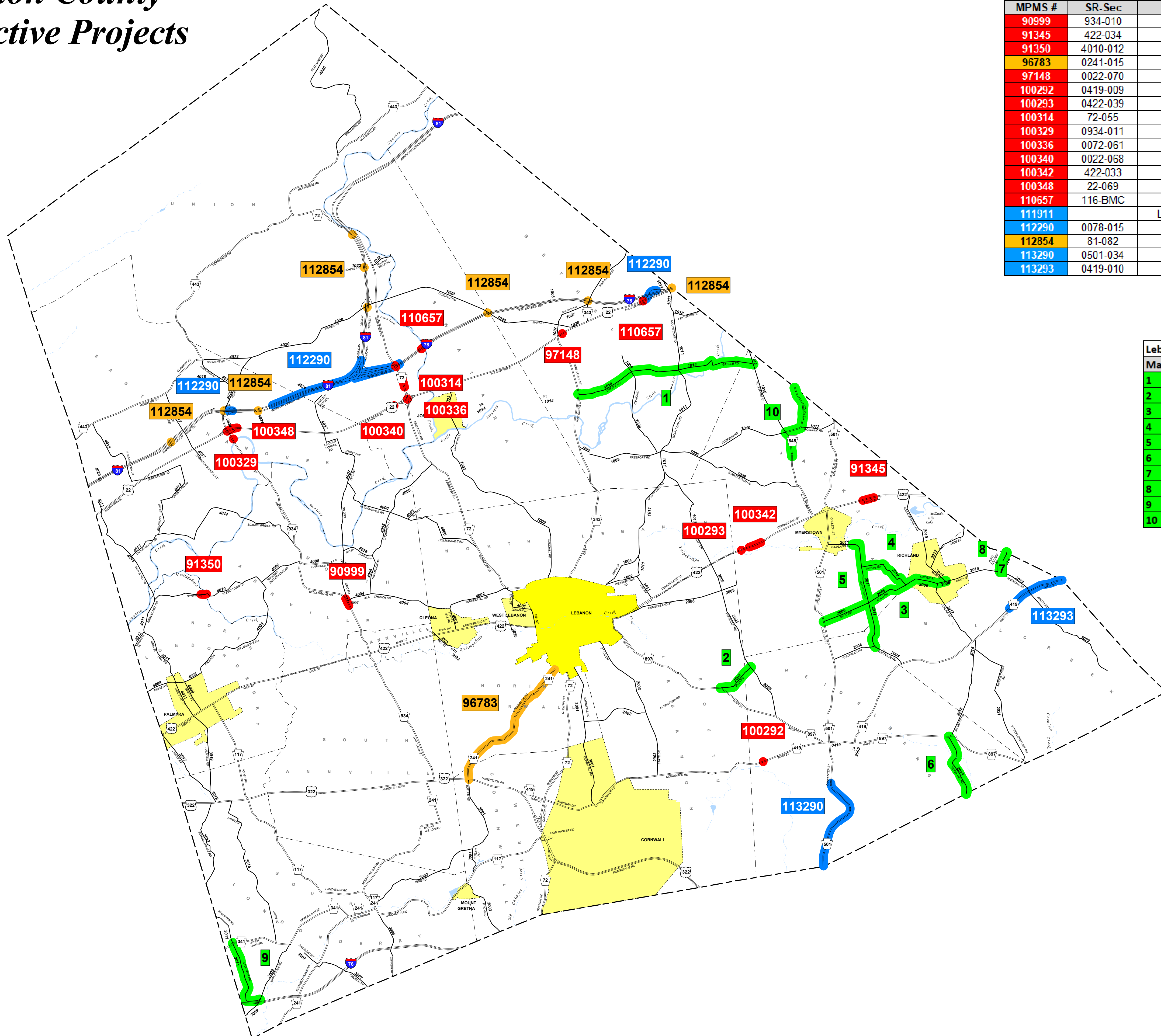


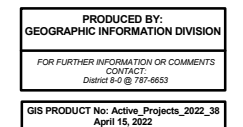
Lebanon County 2022 Active Projects

MPMS #	SR-Sec	Title	Type
90999	934-010	Bellegrove Road Bridge-B	Bridge Replacement
91345	422-034	US 422 Bridge-B	Bridge Replacement
91350	4010-012	Syner Road Bridge-B	Bridge Replacement
96783	0241-015	Colebrook Road Improvemt	Safety Improvement
97148	0022-070	Allentown Blvd over Beach-B	Bridge Replacement
100292	0419-009	PA-419 over Hammer Cr-B	Bridge Restoration
100293	0422-039	Cumberland Street Bridge	Bridge Restoration
100314	72-055	Ebenezer Road Bridge-B	Bridge Restoration
100329	0934-011	PA 934 ovr Indiantown Run	Bridge Restoration
100336	0072-061	Ebenezer Rd/US 22	Bridge Restoration
100340	0022-068	Allentown Blvd/Kevins Run-B	Bridge Restoration
100342	422-033	Cumberland Street Brdg 3-B	Bridge Replacement
100348	22-069	Allentown Blvd East Brdg-B	Bridge Preservation - Federal
110657	116-BMC	District-Wide Bridge Maint Contract 2019-2023	General Maintenance
111911		Lebanon City Resurf - Phase 2 - 10th St - PA 72	Highway Restoration
112290	0078-015	I-78 Patching I-81 to PA 72	Interstate Maintenance Program
112854	81-082	Lebanon TSMO ITS Device Project 2	Intelligent Transportation System
113290	0501-034	Furnace Hill Pike Resurface	409 Expanded Maintenance
113293	0419-010	PA 419 Main St Resurface	409 Expanded Maintenance

Lebanon County CY 2022 M213 Department Force Surface Improvement Work						
Map#	SR	Bseg	Boff	Eseg	Eoff	Type
1	1014	80	0	190	2268	Seal
2	2004	10	0	20	2818	Seal
3	2006	10	0	70	1080	Seal
4	2010	10	0	30	1920	Seal
5	2011	10	0	54	1588	Seal
6	2013	10	0	30	2836	Seal
7	2014	10	0	20	1549	Seal
8	2014	10	0	20	1549	Level
9	3011	10	0	40	1928	Level
10	645	40	800	80	2901	Paving



Color	Description
Red	Contracted Bridge Project
Blue	Contracted Highway/Resurfacing Project
Green	Department Force Highway Project
Orange	Traffic/Safety Related



Disclaimer: District 6-9 provides the data within these pages for your personal use. The maps shown here are for illustration purposes only and are not suitable for site specific decision making. Information is provided with the understanding that it is not guaranteed to be accurate, correct or complete and conclusions drawn from such information are the responsibility of the user.